

# RM6179 LEGAL SERVICES PANEL: LOT 1: GENERAL LEGAL ADVICE AND SERVICES

Addleshaw Goddard LLP

Version 2: January 2022

 **ADDLESHAW  
GODDARD**

**MORE IMAGINATION MORE IMPACT**

Crown  
Commercial  
Service  
*Supplier*



# CONTENTS

1	INTRODUCTIONS	24	REAL ESTATE AND REAL ESTATE FINANCE
2	TEAM STRUCTURE	25	RESTRUCTURING/ INSOLVENCY
3	SOCIAL VALUE	26	RETAINED EU LAW AND EU LAW
4	COMPETITION LAW	27	TAX LAW
5	CONSTRUCTION LAW	28	AVIATION AND AIRPORTS
6	CONTRACTS	29	CHARITIES
7	CORPORATE LAW	30	EDUCATION LAW
8	DISPUTE RESOLUTION AND LITIGATION	31	ENERGY AND NATURAL RESOURCES
10	EMPLOYMENT LAW	32	FOOD, RURAL AND ENVIRONMENTAL AFFAIRS
11	ENVIRONMENTAL LAW	33	FRANCHISE LAW
12	INFORMATION LAW INCLUDING DATA PROTECTION LAW	34	HEALTH AND HEALTHCARE
13	INFORMATION TECHNOLOGY LAW	35	HEALTH AND SAFETY
14	INTELLECTUAL PROPERTY LAW	36	IMMIGRATION
15	NON COMPLEX FINANCE AND INVESTMENT.	37	LIFE SCIENCES
16	OUTSOURCING	38	MARITIME AND SHIPPING
17	PARTNERSHIP LAW	39	MEDIA LAW
18	PENSIONS LAW	40	PUBLIC INQUIRIES AND INQUESTS
19	PLANNING LAW	41	PUBLIC INTERNATIONAL LAW
20	PROJECTS/PFI/PPP PUBLIC LAW	42	TELECOMMUNICATIONS
22	PUBLIC LAW	43	THE LAW OF INTERNATIONAL TRADE, INVESTMENT AND REGULATION
23	PUBLIC PROCUREMENT LAW		

*We can confirm the information provided throughout is not commercially sensitive.*

# INTRODUCTION

## OUR COMMITMENT TO YOUR WORK

Acting for HM Government is part of Addleshaw Goddard's DNA. We have advised numerous ministerial departments, executive agencies and NDPBs on strategically important, high profile projects and programmes for many years.

We understand not only the legal framework within which government operates but also the high level of political scrutiny which is applied to the decisions it makes and how this impacts on the legal advice it requires. For example, public money must be managed demonstrably in accordance with all applicable standards, the need for transparency and the application of FOIA and the EIR must be borne in mind at all times, contract terms must take into account wider strategic, policy and economic objectives, including net zero targets, and susceptibility to judicial review requires a robust audit trail to justify every decision.

We are extremely proud of our long and successful relationship with the public sector, which in recent times has included successful defence of claims against government procurement, high profile public inquiry work, and the refurbishment of iconic, landmark buildings.

Our public sector teams work from offices across the UK, combining true national reach with deep local roots.

This prospectus provides a flavour of Addleshaw Goddard's experience across the full range of legal services required by government.

## WHAT YOU CAN EXPECT WHEN WORKING WITH AG

**BREADTH AND DEPTH OF EXPERIENCE:** with more than 290 partners and more than 750 other lawyers specialising in more than 50 areas of law, you will have quick access to the specialists you need.

**EXPERIENCED PUBLIC SECTOR LAWYERS:** our lawyers understand the legal, operational and commercial framework in which government and the wider public sector operates and provide advice which takes this framework fully into consideration.

**INNOVATIVE APPROACHES AND LEGAL TECHNOLOGY:** we combine our cutting-edge legal technology (including AI, automation, analytics, collaboration and storage), process improvement and strategic advisory capabilities to provide a solution to deliver work in the most efficient and cost effective way.

**SOCIAL VALUE COMMITMENT:** we are committed to tackling workforce inequality, improving health and wellbeing and fighting climate change. You will experience this in everything we do.

**INTERNATIONAL EXPERTISE:** working from 13 offices across three continents we've acted in 96 countries for our clients in the last three years.

## WHY AG?



### COLLABORATION

Working collaboratively with in-house teams, other advisors and other law firms to provide you with the benefit of different perspectives.



### NATIONAL REACH

Understanding the context of local decisions and the levelling up agenda, and bringing this knowledge to the advice we give.



### COMMITMENT TO GOVERNMENT WORK

Providing strategic advice that enables quicker, better decisions

# TEAM STRUCTURE

We have a dedicated CCS team of more than 50 lead partners and associates, across both the mandatory and optional specialisms.

They are supported by our Public Sector and Local Government team of who regularly work alongside public sector clients and our wider team of 291 partners, more than 750 other lawyers and over 200 paralegals from across the firm. This team combines combines the right specialists, in the right location at the right level.

## MANDATORY SPECIALISMS

<b>COMPETITION LAW</b> Bruce Kilpatrick Al Mangan	<b>INFORMATION LAW</b> Helena Brown Ross McKenzie	<b>PROJECTS/PFI/PPP</b> Paul Hirst Stephanie Townley
<b>CONSTRUCTION LAW</b> James Reynolds Jonathan Tattersall	<b>INFORMATION TECHNOLOGY LAW</b> Paul Bentham Andrew Carter	<b>PUBLIC LAW</b> Bill Gilliam Paul Rowley
<b>CONTRACTS</b> Paul Bentham Andrew Carter	<b>INTELLECTUAL PROPERTY LAW</b> Paul Bentham Andrew Carter	<b>PUBLIC PROCUREMENT LAW</b> Michael Rainey Jonathan Davey
<b>CORPORATE LAW</b> Shelley McGivern Simon Wood	<b>NON COMPLEX FINANCE &amp; INVESTMENT</b> Martin O'Shea Richard Chandler	<b>REAL ESTATE &amp; REAL ESTATE FINANCE</b> Anna Heaton Ian Smith
<b>DISPUTE RESOLUTION &amp; LITIGATION</b> Bill Gilliam Louise Dobson	<b>OUTSOURCING</b> Paul Bentham Stephanie Townley	<b>RESTRUCTURING / INSOLVENCY</b> Andy Bates Fraser Ritson
<b>EMPLOYMENT LAW</b> Shakeel Dad Kate McGough	<b>PARTNERSHIP LAW</b> Michael O'Connor Andrew Pettinger	<b>RETAINED EU LAW AND EU LAW</b> Al Mangan Bruce Kilpatrick
<b>ENVIRONMENTAL LAW</b> Michelle Headrige Joanne Holbrook	<b>PENSIONS LAW</b> Catherine McAllister Judith Donnelly	<b>TAX</b> Michael Hunter Chris Fox
	<b>PLANNING LAW</b> Marnix Elsenaar Sarah Baillie	

## OPTIONAL SPECIALISMS

<b>AVIATION AND AIRPORTS</b> David Shaw Lauren Payne	<b>IMMIGRATION</b> Sarah Harrop Sajida Hussain
<b>CHARITIES</b> Pervidner Kaur Laura Woffinden	<b>LIFE SCIENCES</b> Shelley McGivern Michael O'Connor
<b>EDUCATION LAW</b> Michael O'Connor Stephanie Townley	<b>MARITIME AND SHIPPING</b> Ed Watt Chloe Oakshett
<b>ENERGY &amp; NATURAL RESOURCES</b> Paul Dight Sara Gilmore	<b>MEDIA LAW</b> David Engel Neil O'Sullivan
<b>FOOD, RURAL &amp; ENVIRONMENTAL AFFAIRS</b> Michelle Headrige Jo Holbrook	<b>PUBLIC INQUIRIES &amp; INQUESTS</b> Erin Shoesmith Helen Mattingley
<b>FRANCHISE LAW</b> James Whittaker Georgina Powling	<b>PUBLIC INTERNATIONAL LAW</b> John Tweedale Ben Burnham
<b>HEALTH &amp; HEALTHCARE</b> Michael O'Connor Stephanie Townley	<b>TELECOMMS</b> James Whittaker Suzanne Moir
<b>HEALTH &amp; SAFETY</b> Erin Shoesmith Adrian Mansbridge	<b>INTERNATIONAL TRADE, INVESTMENT AND REGULATION</b> Nicola Peters Al Mangan



## WHO TO CONTACT

**Supplier Relationship Manager:**  
Michael Rainey

**Key point of contact for bid/tender opportunities:**  
BDTenders@  
addleshawgoddard.com

# SOCIAL VALUE

## TACKLING WORKFORCE INEQUALITY

We are focused on tackling inequality, both within our workforce and within the wider legal profession.

- **Contextual Recruitment:** removing A-Level Criteria and partnering with RARE recruitment to flag disadvantaged candidates and the context within which they achieved their grades.
- **Supporting our staff from under-represented groups:** through diversity & inclusion networks (covering gender, race, disability and LGBTQ+) which have over 300 members and have promoted inclusive behaviours across the business.
- **Sponsorship and development programmes:** including a programme for female mid-level associates, reverse mentoring programmes for partners and a specific mentor programme led by senior LGBTQ+ colleagues.
- **BBC 50:50 project:** promoting balanced gender representation externally. We were the first firm to join and are implementing media skills training for women and under-represented groups.
- **Supporting more accessible routes into our professions:** including our legal apprenticeship programme (40+ apprentices since 2013) and partnering with "Aspiring Solicitors" and "Allaboutlaw" to help individuals from underrepresented communities break through.
- **Tackling disability:** as Disability Confident Employers and signatories to the Valuable 500, we have made changes including launching a policy to support those with caring responsibilities and introducing development programmes designed to support our neurodiverse talent.

## IMPROVING HEALTH AND WELLBEING

We deliver wellbeing support through our network of trained Mental Health Champions, specialist coaching, training and specialist coaching, training and an employee assistance programme.

- **The Mindful Business Charter (MBC):** this unites client and supplier in a shared agenda for better mental health and influences staff, clients, suppliers and the wider profession to make healthy working practices the norm. The MBC now has 80 corporate signatories and charitable status and charitable status and is a standing agenda item at a number of relationship review meetings. We are facilitating. We are facilitating workshops about updating our MBC working practices in light of COVID-19 and how we can become more mindful in the way we work together.
- **Supporting physical wellbeing:** subsidising memberships, apps or home gym equipment, offering regular online sessions on topics such as better sleep and desk-based exercise and direct access to virtual GP services and physical wellbeing support.
- **Supporting mental wellbeing:** offering specialist 1:1 coaching for staff with work-related anxiety issues and making wellbeing a standing agenda item at regular 'check in' meetings. A working group tackles issues connected to the menopause and provides specialist training on domestic abuse and suicide awareness.

## FIGHTING CLIMATE CHANGE

We continually review our environmental performance and undertake initiatives to reduce our environmental impact.

- **Carbon reduction:** we are proud of the progress we have made so far in reducing carbon emissions per employee by 77% since 2016 and are committed to doing more, including achieving a Carbon Neutral accreditation by 2024.
- **The Chancery Lane Project:** a bank of sustainability clauses and provisions which can be used in all sectors. Our lawyers took part in a "hackathon" in 2020 in which new clauses relevant to supply chain supply chain compliance, including the "Zoe and Bea's Clause" were created. This sets out a green procurement checklist to make a standard supplier agreement focus on emissions across a value chain.
- **Sustainability – Pain To Net Gain:** working with our clients and 1,000 senior business and finance leaders we developed a virtual sustainability toolkit, identifying key sources of risk and the things to consider for anyone reshaping their sustainability strategy.
- **Working with clients:** to help them achieve their sustainability goals, including on carbon reduction plans and a carbon consultancy to map the carbon data and prepare plans in line with government guidance.

# MANDATORY SPECIALISMS

---



# COMPETITION LAW

## HOW WE CAN HELP YOU

AG's competition and regulatory team acts for a huge variety of private and public sector clients and specialises in all aspects of competition law, including antitrust investigations, mergers and subsidy control. With offices in the UK (England and Scotland), France and Germany, we are well placed to offer advice across these jurisdictions.

Our team receives excellent feedback for its pragmatic approach to advisory and transactional work. We pride ourselves on our ability to understand the competition law risks our clients face and the commercial and regulatory context in which they work.

We have particular strengths in:

- the regulated UK utility sector where our clients include Northern Ireland Electricity Networks, SSE, Manchester Airports Group, Royal Mail and the Department for Transport; and
- Banking and financial services, where we act for major UK banks, PSPs and insurers.

## HOW WE HAVE HELPED OTHERS

### THE DEPARTMENT FOR TRANSPORT

Advising on competition law and regulatory aspects of the Williams Shapps Plan for rail reform across a number of workstreams relating to fares and ticketing, access and information sharing.

### WEST MIDLANDS COMBINED AUTHORITY AND CORNWALL COUNTRY COUNCIL

Advising on the bus services options assessments relating to the options available to the Mayoral Combined Authorities following enactment of the Bus Services Act 2017.

### A MAJOR UK RAIL OPERATOR

Advising on a number of competition law and subsidy control matters, including aspects of rail reform and defending a competition law dispute.



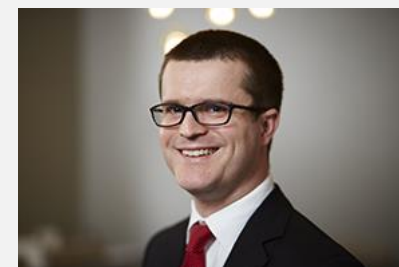
**BRUCE KILPATRICK**

**Partner**

+44 (0)77 4893 6591

Bruce.Kilpatrick@

addleshawgoddard.com



**AL MANGAN**

**Partner**

+44 (0)77 2578 1720

Al.Mangan@

addleshawgoddard.com

# CONSTRUCTION LAW

## HOW WE CAN HELP YOU

Addleshaw Goddard's construction and engineering team has over 110 specialist lawyers. The team has a strong and well established reputation for providing clients with clear, commercial and pragmatic solutions from the structuring and inception of projects, through to contract drafting and to risk management and problem solving to ensure successful completion. We support our clients to deal with issues such as supply chain insolvency and to resolve disputes quickly and cost-effectively. Our recent experience includes:

- Contracts for major social infrastructure, working with central and local government.
- Advising UK government controlled bodies in the nuclear and defence sectors on major capital programmes.
- Advising on major public sector projects, transport infrastructure and urban regeneration.
- Advising on public sector disputes, with a key strength in health, education and social housing PFI disputes.

## HOW WE HAVE HELPED OTHERS

### UNITED KINGDOM HOUSES OF PARLIAMENT

Addleshaw Goddard is a legal advisor to The Corporate Officer of the House of Commons and The Corporate Officer of the House of Lords in relation to the Palace of Westminster Restoration and Renewal Programme (c£5bn), and the closely related programme for the refurbishment and redevelopment of historic and listed buildings on Parliament's Northern Estate (c£500m) (until recently known as the UK Parliament Northern Estate Programme (NEP)).

Our work relates to the drafting and procurement of major NEC3 and NEC4 based works and services frameworks.

### LUTON AIRPORT

We advised London Luton Airport on the £200m development of its mass passenger transit system between Luton Airport Parkway railway station and the airport terminal.

### COMPLEX CONSTRUCTION DISPUTES

We have advised on many major disputes in the health, education and social housing sectors, including for example acting for a major health trust in disputes surrounding a £400m hospital development.



**JAMES REYNOLDS**

**Partner**

+44 (0)77 4893 6591

James.Reynolds@

addleshawgoddard.com



**JONATHAN TATTERSALL**

**Partner**

+44 (0)79 2194 0146

Jonathan.Tattersall@

addleshawgoddard.com



# CONTRACTS

## HOW WE CAN HELP YOU

Our commercial team has a strong national presence and is active across an array of sectors including the public sector, transport, energy, water and telecoms.

We are creative and imaginative but pragmatic in our service delivery. We have the experience to handle large-scale projects and complex issues to manage risk.

Our experience includes advising on:

- Drafting and negotiating commercial agreements including outsourcing, manufacturing contracts, supply contracts, agency, distribution and concession contracts, shared services, and joint ventures
- The advantages and disadvantages of contractual structures
- Contract changes (including material changes), governance and dispute resolution to keep projects on track
- Emerging issues like IR35 liability
- Exit arrangements, intellectual property, novations and TUPE
- Public infrastructure regulations relating to energy, water, transport and telecoms. arrangements from changes to IR35advanataantages and disadvantages of corporate and contractual joint ventures

## HOW WE HAVE HELPED OTHERS

### DEPARTMENT FOR INTERNATIONAL TRADE

We advised on an agreement for the provision of temporary personnel to the department. This was the first procurement undertaken by the Department and we advised on the contract between the Department and the selected bidder, including in relation to emerging issues such as changes to IR35 legislation.

### DEPARTMENT FOR TRANSPORT

We advised on the establishment of a contractual joint venture between the Department and its arm's length bodies, including HS2, relating to Euston station to improve communication and collaboration at Euston station We advised on the structure of the joint venture ; the drafting and negotiation of the contractual terms to ensure value for money and to ensure appropriate control of safety critical elements.

### GLOBAL INDUSTRIAL COMPANY

We advised on the provision of an innovative battery as a service solution to one of the UK's leading bus companies. Our advice included overall structure of the complex transaction, involving negotiation with multiple subcontractors and advice on contracts relating to smart charging software as a service, telematics software and hardware and battery servicing and maintenance.



**PAUL BENTHAM**

**Partner**

+44 (0)77 7558 6426

Paul.Bentham@

addleshawgoddard.com



**ANDREW CARTER**

**Managing Associate**

+44 (0)77 7619 6703

Andrew.Carter@

addleshawgoddard.com

# CORPORATE LAW

## HOW WE CAN HELP YOU

AG's M&A team boasts a flagship client base, including Rolls-Royce, Dixons Carphone, The Hut, The Co-operative and JD sports, and regularly advises FTSE 100 companies on strategic and routine M&A (public and private).

We have a market leading focus on the M&A process by combining efficient process with strategic clarity, great value, price certainty and drive.

Our corporate services team provide a broad spectrum of highly sought-after company secretarial services and support, including (not limited to):

- Ensuring compliance with statutory duties.
- Company and LLP incorporations (both bespoke and shelf).
- Filings at Companies House.
- Maintenance of statutory records in accordance with Companies Act 2006.
- Re-registration of companies from private to public or vice versa;
- Dealing with structural changes to a company; and
- Company name, registered office and board changes.

## HOW WE HAVE HELPED OTHERS

### PEEL HOLDINGS AND LEGAL & GENERAL

Advising on the disposal of 75% interest in Media City to Land Securities Group Plc for a net purchase price of £425.6m for the 75 per cent interest.

### SANNE GROUP PLC

Advising on the approximately £1.51 billion recommended acquisition of Sanne Group plc by Apex Acquisition Company Limited (a wholly owned indirect subsidiary of Apex Group Ltd.).

### UNIVERSITIES SUPERANNUATION SCHEME TAKE OVER OF KCOM PLC

Advising on a competitive takeover of the company by Universities Superannuation Scheme and MEIF 6 Fibre (£627m successful bid).

### WAKEFIELD COUNCIL

Advising Wakefield Council as lead authority for public sector buying organisation, YPO, on its proposed acquisition of Findel Education from Studio Retail Group. YPO is the largest local authority purchasing consortium in the UK comprising 13 founder member authorities. The proposed £50m acquisition was intended to give YPO the ability to continue to compete against online sellers in supplying schools, nurseries and local authorities with resources. The acquisition failed to obtain clearance from the UK Competition and Markets Authority.



**SHELLEY MCGIVERN**

**Partner**

+44 (0)78 3467 7774

Shelley.Mcgivern@  
addleshawgoddard.com



**SIMON WOOD**

**Partner**

+44 (0)79 7975 7373

Simon.Wood@  
addleshawgoddard.com

# DISPUTE RESOLUTION AND LITIGATION

## HOW WE CAN HELP YOU

AG offers a team of robust and skilled litigators. Our experienced team comprises people with a broad commercial litigation background and specialised experts in key practice areas.

The team advises on a wide variety of disputes, including: major project and contract issues, public and utilities procurement advice and challenges, judicial review(JR)/regulatory challenges and investigations and competition law. Examples of our specialisms include:

- Project and procurement disputes (including critical outsourcing and supply chain issues) and Judicial Review actions;
- Contract disputes and company and corporate matters;
- Product litigation and Intellectual Property matters
- Procurement disputes and JR actions.

Our lawyers have appeared before all commercial divisions of the High Court, the Court of Appeal, the Supreme Court, and the Court of Justice of the European Union. We have been instructed in international arbitrations under the main arbitral rules and seated in all the main arbitral centres and frequently participate in all forms of dispute resolution, including without prejudice negotiation, mediation and expert determination.

Our recent experience includes acting for:

- Public and private clients on the resolution of multi-£m dispute in relation to a wide range of issues including non-performance/compliance, delay, change and termination
- A variety of contracting authorities and utilities, as well as bidder clients on procurement challenges and achieving successful outcomes, by way of negotiation, strike out/summary judgment and swift partial re-run. We've also advised behind the scenes on highly sensitive procurement issues
- A large financial services organisation on a £multi-million IT project where the functionality delivered did not meet ITT specification. The project was key for delivering customer facing and internal systems to comply with regulatory obligations and processing customer applications.

We have the ability to deal with all aspects of UK and international disputes, utilising our teams of specialist experts across our UK and international offices. Where required, we can also involve our wider global best friend network. had to be delivered as agreed;



**BILL GILLIAM**  
Partner  
+44 (0)77 2035 0327  
Bill.Gilliam@  
addleshawgoddard.com



**LOUISE DOBSON**  
Partner  
+44 (0)75 2523 8996  
Louise.Dobson@  
addleshawgoddard.com



**SUSAN GARRETT**  
Partner  
+44 (0)77 7558 6578  
Susan.Garrett@  
addleshawgoddard.com



**CLARE DWYER**  
Legal Director  
+44 (0)77 7558 6511  
Clare.Dwyer@  
addleshawgoddard.com

# DISPUTE RESOLUTION AND LITIGATION

## HOW WE HAVE HELPED OTHERS

### THE SECRETARY OF STATE FOR TRANSPORT

The 2019 Rail Franchising Litigation involved four separate claims against the Secretary of State for Transport (the **Defendant**), which were case managed into a single case. The claims arose out of three separate rail franchise procurement competitions run between 2017 and 2019: East Midlands; South Eastern; and the West Coast Partnership (involving both West Coast and HS2). AG advised the Defendant in the case as part of a multi-advisor legal team which also involved the Government Legal Department, DLA Piper, and Eversheds Sutherland.

A particular issue that arose in those competitions was the extent of pensions risks that were required to be accepted by the franchisee under the contract terms accompanying the invitation to tender (ITT).

The court ruled in favour of the Defendant on all grounds, holding that the pensions terms of the tender met the requirements of transparency and fairness; that the process followed was compliant with the relevant regulatory framework and principles of proportionality and equal treatment; and that the Department acted lawfully in disqualifying the claimants and awarding the franchises to the winning bidders.

### INVESTIGATIONS

Conducting an independent investigation into a number of accounting irregularities in the international division of Speedy Hire plc.

### A SUBSIDIARY OF FTSE 100 COMPANY DIAGEO PLC

Advising on high profile international arbitrations concerning Diageo's joint-venture brewing and distribution arrangements with SABMiller in Tanzania (ICC Rules, London seat). We also acted in ancillary court proceedings up to the English Court of Appeal.

### HIGH SPEED TWO LIMITED

Advising HS2 limited on its successful defence of a major procurement challenge brought by an unsuccessful bidder, Bechtel Limited. The Court dismissed all claims brought by Bechtel, in relation to HS2's £1.3 billion procurement for its Construction Partner for Old Oak Common, one of the two major Southern Stations on the new high speed line.

### A NUMBER OF NHS ORGANISATIONS

Advising a number of NHS organisations including trusts and foundation trusts in successfully defending major challenges by bidders and also bringing challenges themselves against commissioners.

### A LARGE COUNTY COUNCIL

Advising on a major contract dispute with BT worth in excess of £50 million in relation to issues concerning the fibre broadband project. This included advising in the background to get BT's performance back on track and directly intervening in relation to certain failures by the supplier to obtain urgent remedial action.

# EMPLOYMENT LAW

## HOW WE CAN HELP YOU

AG's Employment & Immigration team covers all aspects of employment law. We offer a complete service covering the full range of employment and immigration issues including:

- High stakes litigation in the Employment Tribunal and High Court
- Change management (restructures, reorganisations and redundancy processes)
- Major projects and transactions
- Complex employee relations issues
- HR compliance projects and investigations.

Members of the team have specialist experience in handling complex and sensitive matters for clients which are high value or have the potential to affect strategy and reputation.

We tailor our approach to each matter having regard to the issues at stake and the client's priorities.

## HOW WE HAVE HELPED OTHERS

### THE DEPARTMENT OF HEALTH

Advising the Department of Health on the termination of an independent sector treatment centre contract, in relation to which employees TUPE transferred from the private sector provider to an NHS employer, and NHS employees were brought out of "retention of employment model" related secondment arrangements.

### A MAJOR NATIONAL PUBLIC SECTOR INFRASTRUCTURE OWNER

Advising a major national public sector infrastructure owner on defending Employment Tribunal claims since 2009, from claims relating to the implementation of terms agreed collectively with trade unions to complex, fact sensitive and high value whistleblowing and discrimination claims.

### A METROPOLITAN COUNCIL

Advising a Metropolitan Council on defending a class action brought by more than 70 employees following a change to their terms and conditions with the claims valued at more than £1.5m and with strong trade union support.

### DEPARTMENT OF HEALTH

Advising on the removal of a high-profile and long-standing CEO of a Trust.



**SHAKEEL DAD**

**Partner**

+44 (0)77 7657 0433

Shakeel.Dad@

addleshawgoddard.com



**KATE MCGOUGH**

**Legal Director**

+44 (0)75 4055 8109

Kate.McGough@

addleshawgoddard.com

# ENVIRONMENTAL LAW

## HOW WE CAN HELP YOU

AG has the breadth and strength of experience and expertise to advise on all aspects of environmental compliance, risks and liabilities in real estate, corporate and business restructuring transactions, in major infrastructure projects, regulatory investigations and enforcement, and related civil claims (including group actions). Working with highly-regulated sectors and supporting colleagues to address environmental risk – including in areas such as public and EU retained law; energy, natural resources and climate change.

They have experience of major incident response, joint regulator investigations (including on matters of national security), Public Inquiries, ICO appeals and other environmental challenges.

They also give stand-alone strategic advices on a wide range of issues and supports clients including natural capital, ESG and supply chain governance, green claims and net-zero strategies, biodiversity, resource efficiency and asset resilience, and environmental reporting.

## HOW WE HAVE HELPED OTHERS

### MAJOR INCIDENT

Representing a business during a significant Environment Agency Investigation involving a Government COBRA Meeting.

### NATIONALLY SIGNIFICANT INFRASTRUCTURE PROJECTS

Advising National Grid Ventures on its Government supported Humber CCUS Project.

### RESTRUCTURING

Strategic advice to an administrator on environmental liability and contingency planning for a range of outcome scenarios relating to a UK manufacturer with cross-sector and cross-border implications.

### CIVIL DISPUTE

Supporting a Local Authority on a issues relating to a third party operated energy from waste facility, including permitting, nuisance, insurance matters, trespasser/protester risks and a targeted campaign against the facility.

### PUBLIC INQUIRY

Representing Southern Water in its 2018 South Hampshire Public Inquiry and the development of their interim abstraction scheme and longer term Havant Thicket Reservoir solution.



**MICHELLE HEADRIGE**

**Partner**

+44 (0)77 7558 6472

Michelle.Headrige@

addleshawgoddard.com



**JOANNE HOLBROOK**

**Legal Director**

+44 (0)78 0344 2571

Joanne.Holbrook@

addleshawgoddard.com

# INFORMATION LAW

## HOW WE CAN HELP YOU

AG's information law team has a large network of specialist information lawyers across the UK and internationally. We regularly advise high profile clients, who operate in the public eye, on strategic and complex information matters. We are noted for our pragmatic, no-nonsense approach and our ability to handle large scale information projects, given the strength and depth of our team. We advise on:

- Data protection and FOI audit, gap analysis and policy
- Strategic advice on data related projects, including exec briefing
- Handling data incidents and security breaches including liaising with regulators
- Running privacy impact assessments
- Supporting on data subject access, FOI and EIR requests using our streamlined review tools and specialist paralegal team
- Advising on data commercialisation including licensing strategy
- Drafting / negotiating information clauses in contracts, including liability assessment, international transfer and supplier audit
- Sitting on internal FOI appeals panels.

## HOW WE HAVE HELPED OTHERS

### NHS MOORFIELDS EYE HOSPITAL – DATA SHARING

Advising on the data sharing agreement with Roche Products Ltd as part of the Insight Collaboration Agreement entered into with University Hospital NHS FT and the University of Birmingham, Google Health and Action against Age related macular degeneration.

### HSBC – PROJECT SUPPORT

Advising on the roll out of HSBC's first ever business banking app including data mapping, supplier contract negotiations, advising on privacy notices and marketing consent requirements.

### BP INTERNATIONAL – DATA SUBJECT ACCESS REQUESTS

Advising on handling complex data subject access requests across their business including employee requests.

### HIGHLANDS & ISLANDS AIRPORTS - FOI

Advising on FOI strategy and regularly on responses to FOI requests on a number of high profile matters.



**HELENA BROWN**

**Partner**

+44 (0)74 0773 5118

Helena.Brown@

addleshawgoddard.com



**ROSS MCKENZIE**

**Partner**

+44 (0)79 1876 7330

Ross.Mckenzie@

addleshawgoddard.com

# INFORMATION TECHNOLOGY LAW

## HOW WE CAN HELP YOU

AG's Information Technology team has a purchaser-focused practice that has built its reputation acting for large corporates, purchasing IT and IT services on a large scale on critical projects which are often transformational and business critical for the clients in question.

The combination of this purchaser focussed expertise and our leading national public procurement practice means we can offer public sector IT expertise with added benefit of the insights of a leading IT practice in the private sector.

Our experience includes advising on:

- Contracts for the procurement of ICT
- Cloud solutions including Saas, Paas and Iaas
- Managed services
- Development and support contracts
- Cyber security and related services
- Escrow arrangements
- Licensing issues and resolution
- Transition, migration, transformation and exit.

## HOW WE HAVE HELPED OTHERS

### NHS BUSINESS SERVICES AUTHORITY

We advised the NHS BSA in relation to the insourcing and IT related contracts for the administration of the NHS Staff Pension Scheme, which is the largest Defined Benefit scheme in Europe. We advised on the existing contract and the exit and transition to new in-house arrangements including licence agreements, developments agreements and support and maintenance agreements.

### TRANSPORT FOR LONDON

We advised on a second generation procurement of IT services relating to the provision of Assisted Transport Services throughout the City of London to provide free taxi services to be used by persons satisfying certain health criteria (e.g. in relation to disability or mobility). The IT aspects enabled a new way of working to allow for on-line booking, tracking of drivers, performance monitoring regarding punctuality and other matters.

### INFORMATION COMMISSIONER'S OFFICE

We have advised the Information Commissioner's Office, the UK Data Protection Authority, on the disaggregation of IT services from several large incumbent suppliers. We have also provided advice more widely in relation to IT service procurement across the ICO's IT contract estate.



**PAUL BENTHAM**

**Partner**

+44 (0)77 7558 6426

Paul.Bentham@

addleshawgoddard.com



**ANDREW CARTER**

**Managing Associate**

+44 (0)77 7619 6703

Andrew.Carter@

addleshawgoddard.com



# INTELLECTUAL PROPERTY LAW

## HOW WE CAN HELP YOU

AG's IP team regularly advises on the full range of IP rights through the IP lifecycle, including risk assessments, brand policing and the implementation of strategies for protection, enforcement and commercialisation of IP.

Our team have substantial experience in advising in all areas of IP, including patents, design rights, trade marks, confidential information, trade secrets, database rights, data, domain names and copyright.

Our experience covers all aspects of IP (contentious and non-contentious) apart from the filing of patents, including:

- Obtaining registered trade mark and design protection
- Advising on IP policies and strategies
- Drafting and negotiating assignments, licences and agreements to exploit IP
- Drafting and negotiating research and development agreements
- Bringing, defending and settling claims for infringement of intellectual property rights.

## HOW WE HAVE HELPED OTHERS

### NATIONAL GRID

We advised on a consortium agreement, IP agreement and exploitation plan for multi-party research and development project benefitting from Innovate UK and NIA funding with Nissan, E.ON, Northern Powergrid, UK Power Networks, Imperial College and the University of Newcastle.

### ROYAL PARKS

We advised on and obtained registered trade mark protection. We also advised on commercial contracts for concessions and events for ROYAL PARKS. In particular, we drafted and advised on the intellectual property aspects of their concession agreement and their event organiser agreement for Hyde Park.

### A MAJOR NATIONAL PUBLIC SECTOR INFRASTRUCTURE OWNER

We advised on the creation and development of its IP Policy for both internal purposes and for suppliers/external stakeholders.



**PAUL BENTHAM**

**Partner**

+44 (0)77 7558 6426

Paul.Bentham@

addleshawgoddard.com



**ANDREW CARTER**

**Managing Associate**

+44 (0)77 7619 6703

Andrew.Carter@

addleshawgoddard.com

# NON COMPLEX FINANCE AND INVESTMENT

## HOW WE CAN HELP YOU

AG's hugely dedicated finance teams advise domestic and international banks, building societies and other major financial institutions, acting for clients in relation to:

- Asset-based lending (both syndicated and bilateral).
- Trade finance and supply chain finance transactions;
- Domestic and international asset finance and leasing matters.
- Claims regarding structured investments (including miss-selling).
- Financial Ombudsman claims; and
- Investigations, regulatory and FSMA enforcement.

Our highly experienced project financing team advises an array of public and private sector clients across a variety of sectors including waste to energy facilities, refinances / restructurings in PPP projects, public-private partnerships (health, roads, education, MOD) and social housing finance.

## HOW WE HAVE HELPED OTHERS

### GREATER MANCHESTER COMBINED AUTHORITY

Advising on its senior development loan facility to Renaker in connection with the development of a 1500 unit, four tower residential scheme in Deansgate, Manchester.

### BRADFORD COUNCIL

Advising on development loan facility to fund the re-development of the Odeon cinema site, Bradford.

### LIVERPOOL CITY REGION COMBINED AUTHORITY

Advising on a loan facility to refinance existing facilities secured on Liverpool Airport and to provide stability for the Airport during the Covid-19 recovery period.

### GREATER MANCHESTER COMBINED AUTHORITY

Advising Greater Manchester Combined Authority on 30 + grant funding arrangements in relation to brownfield housing developments using MHCLG 'Build Build Build' funding;



**MARTIN O'SHEA**

**Partner**

+44 (0)77 7558 6372

Martin.OShea@

addleshawgoddard.com



**RICHARD CHANDLER**

**Legal Director**

+44 (0)77 3814 4072

Richard.Chandler@

addleshawgoddard.com

# OUTSOURCING

## HOW WE CAN HELP YOU

We have worked on a large number of public sector outsourcing projects and have considerable knowledge of the issues and their solutions, in relation to both first and subsequent generation outsourcing.

We also have experience of disaggregation and insourcing.

Our experience working for clients across the public sector and the private sector also gives us a great depth of knowledge and a rounded view.

We advise on all types and aspects of outsourcing including:

- ICT and ICT enabled outsourcing using the ICT Model services (where appropriate)
- Business Process Outsourcing including HR and Payroll outsourcing
- Pensions administration outsourcing
- Change management /governance
- Termination and exit arrangements
- Injunctions to compel performance
- Dispute resolution

## HOW WE HAVE HELPED OTHERS

### SEFTON METROPOLITAN BROUGH COUNCIL

We advised the Council in relation to the procurement of a second generation ICT Outsourcing contract to replace its existing arrangements using the Competitive Dialogue procedure. This was a time-challenged procurement that was of crucial importance for the continuation of the Council's public services.

### UNIVERSITIES SUPERANNUATION SCHEME

We acted for one of the largest principal private pension schemes for universities and other higher education institutions in the UK, on the negotiation of its outsourcing agreement for pensions administration services with Capita Employee Benefits Limited.

### NHS BUSINESS SERVICES AUTHORITY

We advised on the successful procurement of medical advisory and administrative services from Medigold Health Consultancy Limited including all aspects of the procurement helping the NHSBSA to achieve significant operational efficiencies.



**PAUL BENTHAM**

**Partner**

+44 (0)77 7558 6426

Paul.Bentham@

addleshawgoddard.com



**STEPHANIE TOWNLEY**

**Legal Director**

+44 (0)77 3888 8361

Stephanie.Townley@

addleshawgoddard.com

# PARTNERSHIP LAW

## HOW WE CAN HELP YOU

We have extensive experience of creating national and international group structures that combine the best elements of partnership and corporate business vehicles.

We have set up alternative delivery (LLP) models for a number of Foundation Trusts, including advising on and devising the model for the first such vehicle to be established. We can draw from the lessons learned from this work to create efficiency and to present solutions in a constructive way.

Our experience melds together partnership law with public procurement, subsidy control, tax, real estate, construction, corporate law and public governance input.

We are also experts on issues surrounding the sale, merger and demerger of professional firms, and the we are recognised for our leading expertise in large international mergers.

We regularly advise on some of the most difficult partner dispute matters and pride ourselves on securing commercial and confidential settlements, often through alternative dispute resolution and mediation.

## HOW WE HAVE HELPED OTHERS

### NHS PARTNERSHIPS

We devised the wholly owned subsidiary model for Northumbria NHS FT, the first to deliver a range of services back to the Trust. That model has become the exemplar across the NHS. We subsequently developed that model into a partnership arrangement with other NHS Foundation Trusts by devising a LLP model whereby two or more NHS FTs could partner to deliver services back to each other in order to improve quality and efficiency.

### PUBLIC PRIVATE PARTNERSHIPS FOR REGENERATION

We have advised public sector bodies and private sector developers on a large number of partnerships, predominantly LLPs, to regenerate town centres by bringing forward revitalised high streets, mixed use schemes, residential developments and leisure opportunities. This has included the structuring of loan and grant funding arrangements and associated claw back obligations. A specific example is the £200m transport interchange at Stockport together with a long term investment in a private rental scheme development funded by brownfield grants, local authority loans and private sector institutional investments.

### PROPERTY PARTNERSHIPS

We acted for Tameside MBC in its capacity as administrator of the Greater Manchester Pension Fund in its successful joint venture with Urban & Civic, involving a £100million development of high end residential apartments in Manchester using an LLP. Similarly we are currently advising Torbay Council on its joint venture structuring options for town centre redevelopment, giving detailed advice as part of this on public law.



**MICHAEL O'CONNOR**

**Partner**

+44 (0)77 7558 6483

Michael.O'Connor@

addleshawgoddard.com



**ANDREW PETTINGER**

**Partner**

+44 (0)77 7758 6509

Andrew.Pettinger@

addleshawgoddard.com

# PENSIONS LAW

## HOW WE CAN HELP YOU

AG's pensions practice includes a dedicated public sector team that advises clients on the full range of pensions issues, including:

- Scheme funding
- Scheme administration
- Liability management exercises
- Auto-enrolment / re-enrolment
- Early retirement and redundancy payments
- Executive pensions
- TUPE transfers, outsourcings and restructuring
- Dealing with changes to pensions tax allowances
- Life assurance arrangements.

We also have a dedicated team of litigators who specialise in pensions dispute resolution including arbitration and judicial review.

## HOW WE HAVE HELPED OTHERS

### LOCAL GOVERNMENT PENSION SCHEME

Advising administering authorities including advising on eligibility of employees, scheme administration, admission agreements, treatment of academies, investment and pooling.

### ROYAL LIVERPOOL & BROADGREEN UNIVERSITY HOSPITALS TRUST

Advising on the pensions aspects of its PFI procurement project.

### CITRUS PENSION PLAN MASTER TRUST

Advising on drafting rules to mirror public sector schemes including the Principal Civil Service Pension Scheme, the NHS Pension Scheme, the Water Companies Pension Scheme and the LGPS.

### LEE VALLEY REGIONAL PARK AUTHORITY

Advising on matters including Rule of 85 on early retirement, and impact of cap on exit payments on redundancy policy.

### SEFTON METROPOLITAN BOROUGH COUNCIL

Advising on a TUPE transfer of staff with "Best Value" protection including drafting the pensions schedule with particular focus on indemnities to be given, discretionary benefits and ill-health costs.



**CATHERINE MCALLISTER**

Partner

+44 (0)78 0958 6673

Catherine.McAllister@  
addleshawgoddard.com



**JUDITH DONNELLY**

Legal Director

+44 (0)75 4520 0604

Judith.Donnelly@  
addleshawgoddard.com

# PLANNING LAW

## HOW WE CAN HELP YOU

AG's planning team has an excellent reputation for its work on high profile infrastructure projects, particularly in the transport and energy sectors, and on regeneration and housing projects.

Expertise and experience includes:

- advising on the promotion of Development Consent and Transport and Works Act Orders
- advising on all aspects of compulsory purchase orders, the Compensation Code and Upper Tribunal proceedings
- advising local authority and developer clients on all aspects of the planning application process including reviewing planning application documents and negotiating planning and highways agreements
- managing disputes whether defending or bringing a judicial review or statutory challenge
- managing public inquiries whether following a planning appeal, call-in or to secure confirmation of a compulsory purchase order.

## HOW WE HAVE HELPED OTHERS

### A MAJOR NATIONAL PUBLIC SECTOR INFRASTRUCTURE OWNER

On the promotion of a number of Transport and Works Act Order applications and their representations to a number of third party Development Consent Orders. We are also advising this infrastructure owner on a redevelopment scheme that involves working closely with the local County Council.

### LONDON LUTON AIRPORT

We advised Luton Airport on their planning application for the mass passenger transit system linking Luton Airport Parkway station and the terminal building. We subsequently secured a Transport and Works Act Order to enable the operation of the system.

### NEWARK AND SHERWOOD COUNCIL

We advised the Council on the urban extension of Newark at Fernwood which will secure the delivery of 1800 homes. Our work included advising on the determination of the planning applications, the section 106 planning agreements and the securing of funding for the supporting highways infrastructure.



**MARNIX ELSENNAR**

**Partner**

+44 (0)78 7241 3709

Marnix.Elsenaar@

addleshawgoddard.com



**SARAH BAILLIE**

**Partner**

+44 (0)79 1819 4650

Sarah.Baillie@

addleshawgoddard.com

# PROJECTS/PFI/PPP

## HOW WE CAN HELP YOU

Addleshaw Goddard has a mature and broad Projects practice, having been a leading adviser in the sector since the PFI model was first developed.

We advise clients across the projects spectrum; public bodies, sponsors, subcontractors and funders and understand the issues which are important to each of the different stakeholders in major PPP projects. This understanding allows us to broker agreements for our public sector clients which are pragmatic and deliverable.

Our expertise and experience includes:

- Procurement, drafting and negotiation of project documents
- PFI/PPP contract expiry and handback
- Asset management (including LIBOR to SONIA variations)
- PFI/PPP Disputes
- Net zero procurement and contracting
- Covid variations (construction/operation/ revenue)
- Innovative financing and joint venture models.

The examples which follow include both central government and local authority projects which illustrate the strength and depth of the Projects practice at Addleshaw Goddard.

## HOW WE HAVE HELPED OTHERS

### ROYAL LIVERPOOL & BROADGREEN NHS FOUNDATION TRUST

We acted for the Trust from project inception throughout the aftermath of Carillion's insolvency. The Trust's objective was completion of the hospital – in negotiations that were made complex due to the number of competing interests including HM Government. The negotiated termination required the amendment, termination and novation of project contracts and drafting of complex settlement agreements.

### SOUTHERN WATER SERVICES LIMITED

Advising on the c. £120m Havant Thicket Winter Storage Reservoir developed in a collaboration between Southern Water and Portsmouth Water to provide the South East of England with resilience. A brand new model of financing water infrastructure, and held out by Ofwat as an example of innovative financing structures in the sector.

### WtE PPP PROJECT DISPUTE

Advising a major player in the waste sector on disputes arising on a significant WtE PPP project, including construction, later delivery and commissioning.



**PAUL HIRST**

**Partner**

+44 75 9577 7949

paul.hirst@

addleshawgoddard.com



**STEPHANIE TOWNLEY**

**Legal Director**

+44 7738 888361

Stephanie.Townley@

addleshawgoddard.com

# PROJECTS/PFI/PPP

## HOW WE HAVE HELPED OTHERS

### HM GOVERNMENT OF NORTHERN IRELAND AND THE STRATEGIC INVESTMENT BOARD ON DBFO 1 AND DBFO 2

Highways projects with the specific role of ensuring the projects were suitable for the debt market, the Northern Irish market and Government policy.

### A LOCAL AUTHORITY

We have been instructed on a number of social housing projects where, post-Grenfell, there has been an assessment of the materials used in refurbishment and construction. This has uncovered significant defects and resulted in the re-negotiation with the PFI contractors of the PA to support the remediation and continuation of the PFI.

### DUNDEE AND ABERDEEN EFW PROJECTS

We are advising Dundee City Council on their DBFO PPP for a WtE facility at Baldowie in Dundee and Aberdeen City Council, Aberdeenshire Council and Moray Council on their DBO PPP WtE Facility procurement. This includes the impact of Covid-19 and managing contractor claims arising from the pandemic.

### BRITISH OVERSEAS TERRITORY

Advising the Premier and Government of the Turks and Caicos Island on a PPP Scheme for a new hospital and provision of clinical services using the NHS standard form.

### STANDARD FORM BIOBAN CONTRACT

We are advising Zero Waste Scotland on the development of a standard form contract for treatment of residual waste to be used by all Councils ahead of the Scottish Government's 2026 Biodegradable waste landfill ban. Advice includes carbon reduction obligations and use of the Scottish Government's sustainable procurement toolkit to develop the contract specification..

### WAKEFIELD CITY COUNCIL

Advised Wakefield City Council on a variation to its street lighting PFI agreement with an Amey owned project company, under which the project company will retrofit 40,000 street lights with LEDs. This will generate energy savings in excess of 60% of the original projected costs of energy for the project, significantly reduce energy consumption and create huge savings for the Council.

### PFI CONTRACT EXPIRY AND HANDBACK

We are working on a portfolio basis with clients in the social infrastructure sector to prepare and implement early impact strategies in relation to handback of PFI assets, including the development of a toolkit to identify key issues and actions to build a successful and effective handback strategy. Advice includes emerging market practice.

### M40 DBFO EXPIRY AND HANDBACK

We are advising ProjectCo in connection with preparing this Project for handback in 2027, including issues arising on security for handback obligations.



# PUBLIC LAW

## HOW WE CAN HELP YOU

Examples of our extensive experience include:

- Providing contentious support for judicially reviewable bodies and others which exercise statutory duties and powers, often on controversial and/or high public interest issues.
- Pursuing, intervening in or resisting JR applications in the Administrative Court for clients across a range of sectors, whether public bodies or corporates.
- Providing proactive, specialist public law advice to help clients avoid, or minimise the risk of, a challenge being made to their decision-making or consultation processes; and
- Supporting clients on potential regulatory challenges which may impact on their critical business interests.

The team was also involved in the 2019 Rail Franchising Litigation (see page \*\* for more details), which had a judicial review element.

## HOW WE HAVE HELPED OTHERS

### LUTON BOROUGH COUNCIL

We pursued a successful challenge for LBC (alongside those acting for five other authorities) to the Government's decision to cancel the Building Schools for the Future school rebuilding programme without proper consultation. The decision was quashed as unlawful.

### THE INDEPENDENT PARLIAMENTARY STANDARDS AUTHORITY

We advised IPSA, the MPs' expenses body, in an appeal to the Court of Appeal regarding a novel point under the Freedom of Information Act relating to the release of expenses information (we previously acted for it in the First Tier and Upper Tribunals).

### ROYAL LIVERPOOL UNIVERSITY HOSPITALS NHS TRUST AND LIVERPOOL PRIMARY CARE TRUST

We successfully defended two separate judicial review actions by anti-PFI campaigners - alleging a failure to consult the public in respect of the proposed rebuild of the Royal Liverpool Hospital and a later challenge to the scheme's financial business case.



**BILL GILLIAM**

Partner

+44 (0)77 2035 0327

bill.gilliam@

addleshawgoddard.com



**PAUL ROWLEY**

Managing Associate

+44 (0)79 1239 5521

Paul.Rowley@

addleshawgoddard.com

# PUBLIC PROCUREMENT LAW

## HOW WE CAN HELP YOU

AG's specialist public procurement law team enjoys a well-established reputation for handling high value, high profile national and international projects and disputes. A key strength lies in our joint advisory and disputes offering and the practical but innovative advice provided in novel areas.

Our recent experience includes:

- Advising on all of the available procedures under the Public Contracts Regulations 2015, including the competitive procedure with negotiation and competitive dialogue, innovation partnerships and procedures governed by the light touch regime
- The design and conduct of bespoke award procedures under the Concession Contracts Regulations 2016.
- Strategic advice on making direct awards, modifying existing public contracts and mitigating risk
- The successful defence of major procurement challenges brought against the Government and its arm's length bodies, including the 2019 Rail Franchising Litigation and Bechtel v HS2 Limited.

## HOW WE HAVE HELPED OTHERS

### THE DEPARTMENT FOR TRANSPORT

Advising on the procurement and award of the West Coast Partnership rail franchise, which combines the operation of passenger services on the west coast mainline with the design and operation of future passenger services on HS2.

### THE UNITED KINGDOM HOUSES OF PARLIAMENT

Advising on the refurbishment of the Palace of Westminster, designing and conducting various procurement processes for long term contractual arrangements to deliver the extensive 20-year restoration and renewal programme (the first since 1834).

### THE GREATER LONDON AUTHORITY

Advising on its £multi-billion retrofit accelerator innovation partnership, a major sustainability project to develop an innovative solution to mass retrofitting of existing housing stock to create net zero energy (NZE) homes across the London Boroughs.



**MICHAEL RAINEY**

**Partner**

+44 (0)79 1239 5848

Michael.Rainey@

addleshawgoddard.com



**JONATHAN DAVEY**

**Partner**

+44 (0)77 7558 6446

Jonathan.Davey@

addleshawgoddard.com

# REAL ESTATE AND REAL ESTATE FINANCE

## HOW WE CAN HELP YOU

AG's real estate team act for a large number of public authorities including combined and local authorities, NHS Trusts and central government departments and agencies on the full range of real estate and real estate finance work including investment and estate management, portfolio management and lettings, development and regeneration, real estate disputes, real estate partnerships collaborations and joint ventures and lending, forward funding and structured finance transactions.

Our work encompasses a number of specialist sectors including housing, health, transport and education as well as all areas of commercial property.

The team, operating across the UK, is one of the largest practices in the market with 247 fee earners, has won numerous awards, and is ranked highly by independent commentators.

We pride ourselves on responsiveness and supporting our clients through their decision making, offering clear, directional advice based on our extensive market experience. We can provide best in class project management and innovative technology to deliver efficiently and differently.

## HOW WE HAVE HELPED OTHERS

### FULL SERVICE REAL ESTATE EXPERTISE

Delivering the full range of real estate work for a major national public sector infrastructure owner including lettings, sales and purchases, development transactions, development partner appointments and development joint ventures and public sector collaboration arrangements.

### INVESTMENT TRANSACTIONS

Advising local and public authorities on their acquisitions, disposals and lettings including active asset management, applying our market perspective we are able help them improve asset performance and transact more quickly (One local authority client commenting that AG bring "*market insight...because they're immersed in the investment market [with] up to the minute intelligence on buy and sell trends*").

### DEVELOPMENT AND REGENERATION

Acting on major development projects for and involving the public sector including town centre regeneration (Luton, Kirklees, Bradford), transport led development (including in relation to HS2, airports and ports) and on transformational projects such as major energy, health and education developments.



**ANNA HEATON**

**Partner**

+44 (0)77 1218 8960

Anna.Heaton@

addleshawgoddard.com



**IAN SMITH**

**Partner**

+44 (0)79 2149 8125

Ian.Smith@

addleshawgoddard.com

# RESTRUCTURING / INSOLVENCY

## HOW WE CAN HELP YOU

AG's Restructuring team are accustomed to acting for a range of stakeholders on complex restructurings and insolvencies. Our broad experience allows us to see the bigger picture and quickly get to the heart of the matter across a range of sectors, drawing on a range of genuine specialists in sectors such as financial services, energy, transport and health care.

We regularly work with all of the main insolvency practitioner practices, which means we understand how they think and what their priorities / drivers are.

The team get involved at an early stage and this helps identify problems and promote constructive dialogue with stakeholders. It offers the best opportunity for a beneficial outcome, for example, through the rescheduling or refinancing of debt, restructuring of equity, reorganisation or disposal and settlement of disputes, with or without going through the insolvency process.

## HOW WE HAVE HELPED OTHERS

### THE ROYAL LIVERPOOL AND BROADGREEN UNIVERSITY HOSPITALS NHS TRUST

Advising on the managed termination of the Royal Liverpool Hospital PFI Project following the liquidation of Carillion and disruption caused to the Project.

### SYMBIO ENERGY LIMITED

Advising on their financial distress and interactions with Ofgem in connection with the supplier of last resort process; subsequently acting for the administrators of Symbio to enter into a TSA with the incoming supplier of last resort and realise residual assets.

### THE SCOTTISH COAL COMPANY LIMITED (IN LIQUIDATION)

Advising on the complex question of the application of the English insolvency disclaimer power in Scotland, setting legal precedent alongside the Advocate General and Lord Advocate



**ANDY BATES**

Partner

+44 (0)77 3814 3076

Andrew.Bates@

addleshawgoddard.com



**FRASER RITSON**

Partner

+44 (0)77 7558 6361

Fraser.Ritson@

addleshawgoddard.com

# RETAINED EU LAW AND EU LAW

## HOW WE CAN HELP YOU

Members of our team have substantial experience and knowledge of EU law, particularly in relation to EU merger control and subsidy control.

Our subsidy control experts regularly work on major public sector projects. They have deep experience of projects backed by the European Structural and Investment Fund (**ESIF**), as well as the various funding routes which are compatible with EU and UK subsidy control regimes.

Where appropriate, we work in conjunction with third party advisers (for example, where the client requires economic/accounting support on the application of the Market Economy Operator Principle).

This volume and variety of work means that we have strong contacts within the relevant Government departments and can provide pragmatic, risk-based advice to our clients.

## HOW WE HAVE HELPED OTHERS

### DEPARTMENT FOR TRANSPORT

Alongside our Procurement team, we advised DfT on the combined subsidy control and procurement implications of Regulation 1370.

### WEST MIDLANDS COMBINED AUTHORITY

Advising West Midlands Combined Authority on the subsidy control aspects of deploying a £50m DfT grant to make Coventry the UK's first all-electric bus city. This included writing to BEIS to receive sign off on the proposed plan which, having now been approved, will enable the delivery of 297 all-electric buses in Coventry by 2025.

### SHEFFIELD FORGEMASTERS

Acting for Sheffield Forgemasters on the State aid and merger control implications of its successful sale to and major recapitalisation by the Ministry of Defence. This initially included considering the merger control implications of a commercial sale, and subsequently involved advising on various structural options and aid exemptions that would ensure the transaction's compatibility with EU State aid rules (whilst factoring in the potential impact of Brexit).



**AL MANGAN**

**Partner**

+44 (0)77 2578 1720

Al.Mangan@

addleshawgoddard.com



**BRUCE KILPATRICK**

**Partner**

+44 (0)77 4893 6591

bruce.kilpatrick@

addleshawgoddard.com

# TAX

## HOW WE CAN HELP YOU

AG's tax team offers high quality, user-friendly, technical advice that is tailored to meet the client's business and tax requirements.

The corporate tax team services UK and international clients through a combination of expertise delivered through the teams across the offices and using leading advisors in the local markets.

Clients often comment on the high quality, stand-alone nature of the tax practice at AG, as well as the way in which members of the team combine seamlessly with their colleagues across the business in order to deliver innovative and commercial solutions to specific business requirements.

## HOW WE HAVE HELPED OTHERS

### CITY OF BRADFORD METROPOLITAN DISTRICT COUNCIL

Advising on the tax implications of its proposals for the regeneration of the iconic Bradford Odeon building, including obtaining a VAT non-statutory ruling from HM Revenue & Customs.

### TAMESIDE METROPOLITAN BOROUGH COUNCIL

Advising on the regeneration of Princess Street, Manchester in conjunction with a private sector developer.

### AVIVA INVESTORS

Advising on acquisition of remaining stake in Longcross Studios and long term partnership with Netflix



**MICHAEL HUNTER**

Partner

+44 (0)78 4188 9190

Michael.Hunter@

addleshawgoddard.com



**CHRIS FOX**

Partner

+44 (0)770 933 2394

Chris.Fox@

addleshawgoddard.com

# OPTIONAL SPECIALISMS

---



# AVIATION AND AIRPORTS

## HOW WE CAN HELP YOU

Most people travel by air. Some often. Despite recent struggles, airports continue to form part of vital integrated transport infrastructure system. AG's dedicated Aviation and Airports Team has the expertise to work alongside clients in this space to support them wherever they may need us to; we advise on every element from local authority JVs and finding a site, to operations & maintenance concessions. We regularly advise on specialist transport works contracts, designed to drive innovation, whilst driving down cost (delivering more for less). Plus span all development work alongside – from site acquisition to planning and beyond.

We have the capacity to handle large and very complex commercial transactions, acting for project funders, sponsors, developers, employers, constructors, sub-contractors and professional teams as well as the expertise to handle more bespoke projects focussed on your Regulatory, Sustainability and Investment objectives. We are longstanding advisers to the biggest UK carriers including BA and advise on a range of traditional commercial and regulatory aviation matters from loyalty schemes and alliancing to ground handling and services. We are legal partners for cutting edge sustainable aviation projects and advise on the regulation of emerging technology in aviation.

Our ultimate goal is to support you in delivering your Aviation and Airport objectives in a timely, cost effective manner.

## HOW WE HAVE HELPED OTHERS

### MANCHESTER AIRPORTS GROUP (MAG)

Advising on the £1bn Manchester Airport Transformation Programme (including the £500m extension of Terminal 2); its £150m infrastructure frameworks at Stansted, and its £100m capital works frameworks (spanning East Midlands, Manchester and Stansted Airports). Including on two staged / pain gain contracting.

### LONDON LUTON AIRPORT (LLA)

Advising on challenges which have arisen as a result of the Covid-19 pandemic and resulting complexities under its concession agreement with London Luton Airport Operations Limited for the management, operation and development of the Airport.

### TRANSPORT INFRASTRUCTURE MANAGER

Advising a Transport Infrastructure Manager and Drone Operator on aviation regulation and other law applicable in the airspace. Using specialist regulatory air law expertise we have advised on liability, operational and safety rules, and regulatory developments, and the implications for landowners, the public, infrastructure managers and airspace users.

### HIGHLANDS AND ISLANDS AIRPORT (HIAL)

Advising on developing the collaboration arrangements between fifteen undertakings involved in the development of a sustainable aviation test environment, and a multi-million collaborative project to install digital connectivity and 5G infrastructure and capability at HIAL's airports, in connection with the development of hydrogen for cutting-edge hydrogen-powered aircraft.



**DAVID SHAW**

Partner

+44 (0)7725 352746

David.Shaw@

addleshawgoddard.com



**LAUREN PAYNE**

Managing Associate

+44 (0)78 4100 5002

Lauren.Payne@

addleshawgoddard.com



# CHARITIES

## HOW WE CAN HELP YOU

AG' specialist charities team has experience providing advice to more than 100 organisations, including public service providers and household names, as well as smaller local charities and family grant-giving bodies. With experience of acting for charitable organisations of all sizes, as well as for commercial entities engaging with charitable organisations, the team is able to consider matters from both a charitable and a commercial perspective. The team works collaboratively with colleagues from other disciplines to provide focused solutions to the practical problems faced by their clients.

Their experience includes providing advice to charities and their trustees in relation to specific queries, complex transactions and their ongoing duties and obligations. The team manages all aspects of a charity's life cycle, from establishing and registering of charitable bodies and community interest companies to providing strategic advice and assistance with ad-hoc queries ranging from the use of trading subsidiaries and options for mergers and collaboration with other (charitable and non-charitable bodies), to fundraising and commercial participation requirements, and assistance with all aspects of transactions surrounding charitable land, finance and development.

## HOW WE HAVE HELPED OTHERS

### MCS CHARITABLE FOUNDATION

We advised the trustees of the MCS Charitable Foundation on the transfer of a certification scheme established by the Department for Energy and Climate Change (DECC, but now BEIS – Department for Business, Energy and Industrial Strategy) to the newly established charity and its trading subsidiary. The transaction involved consideration of almost all areas of charity law over its duration.

### THE ROYAL COLLEGE OF GENERAL PRACTITIONERS

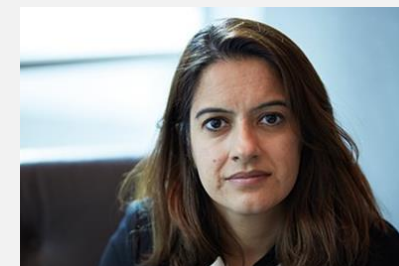
We advised the charity in relation to funding its multi-million pound headquarters. This included advising in conjunction with our banking team in as to the handling of a request to provide security for development finance in light of the College's Royal Charter and charitable status.

### INDEPENDENT SCHOOL INCORPORATION

We advised the governors of an independent school on the incorporation of the charity, including advice regarding structure options, inherent risks with the current structure, the process of incorporation and liaising with colleagues in other specialist areas to identify and deal with pensions, real estate and employment issues.

### NHS CHARTITIES

We advised on a scheme to create leasehold structures between a public body and the trustees of an NHS charity to create value and income for both parties.



**PERVINDER KAUR**

**Partner**

+44 (0)79 2109 3147

Pervinder.Kaur@

addleshawgoddard.com



**LAURA WOFFINDEN**

**Legal Director**

+44 (0)77 3802 3367

Laura.Woffinden@

addleshawgoddard.com

# EDUCATION LAW

## HOW WE CAN HELP YOU

AG have an in-depth understanding of the education environment and adopt an innovative and flexible approach to support our education clients' needs.

We have a strong reputation within both the public and private sector across a variety of areas including, but not limited to:

- Built environment – procurement strategies and the drafting / negotiation / approval of development and funding agreements, project agreements, construction, infrastructure and engineering contracts, partnering agreements, consultancy agreements
- Universities – working with university clients, such as; Salford, Manchester Metropolitan, Oxford, Leeds Becketts, London Metropolitan, Lancaster and Glyndwr, and retaining all of our university panel appointments
- Outsourcing & contract restructuring
- Employment – defending dismissals, discrimination, TUPE and whistleblowing.

## HOW WE HAVE HELPED OTHERS

### MANCHESTER METROPOLITAN UNIVERSITY

Advising on the re-design of their complex procurement processes following disruption to a previous process from a procurement challenge / injunction application. We advised on the creation of a new suite of template procurement documents and processes for the purchase of bespoke and complex requirements, using the competitive procedure with negotiation under the PCR 2015, and its use for two critical IT procurements.

### UNIVERSITY PARTNERSHIP PROGRAMME (UPP)

A transaction with Swansea University, where UPP acquired and operates just over 2,000 rooms on the University's Bay Campus (a 76 acre campus built on the former BP transit depot at Neath Port Talbot), using innovation and agility we were able to navigate UPP through an existing complicated lease structure and income strip arrangement which was constraining further investment.

### LEEDS BECKET UNIVERSITY (LBU)

Drafting template contracts to be used by LBU in connection to consultancy services to be provided by its staff; for standard consultancy services and incorporating services connected to PhD research. Due to the nature of the services to be provided, we had to ensure that the provisions in the contract concerning outputs from the project were in line with LBU's policies (particularly around Intellectual Property Rights). These templates allowed LBU to develop and expand the existing research offered by its schools.



**MICHAEL O'CONNOR**

**Partner**

+44 (0)77 7558 6483

Michael.O'Connor@

addleshawgoddard.com



**STEPHANIE TOWNLEY**

**Legal Director**

+44 (0)77 3888 8361

Stephanie.Townley@

addleshawgoddard.com

# ENERGY AND NATURAL RESOURCES

## HOW WE CAN HELP YOU

Our International Energy and Utilities Group has extensive experience around power generation and renewable energies, from nuclear and gas, to solar, biomass, wind and offshore marine. This broad coverage means that we bring not only real know-how and experience, but also new ideas and innovative ways of working.

Our recent experience involves:

- development and implementation of new regulation within the energy and utilities sector
- advising on industry wide Code modifications in both gas and power
- construction and operation of renewable generation facilities
- oil and gas projects, M&A, JVs, disputes and the full range of up, mid and downstream contracts (such as concessions, license agreements, joint operating and development agreements, offtake and construction /O&M agreements)
- corporate PPAs for some of UK's largest electricity consumers
- Net Zero and Sustainability projects for manufacturers, retail, property
- energy efficiency and forestry schemes for property funds
- water and biogas projects for statutory undertakers

## HOW WE HAVE HELPED OTHERS

### NATIONAL NUCLEAR LABORATORY LTD (NNL)

Projects to enhance and update the NNL facilities on the Sellafield site including contracts with Sellafield Limited and the NDA for major works to the Central Laboratory and for legacy waste processing.

### LOW CARBON CONTRACTS COMPANY

Advising on multiple contracts with Contracts for Difference counterparties including advising on the contracts for Hornsea 1 (structuring of transaction documents in the context of the sale to Global Infrastructure partners) and Hornsea 2 (milestone satisfaction).

### NATIONAL GRID GAS / NATIONAL GRID ESO

Advising on multiple modifications to the industry wide codes in both natural gas and electricity across the entire GB such as the Uniform Network Code as well as the Connection & Use of System Code, Balancing & Settlement Code and Grid Codes all of which are maintained under Licence obligations. We also advise National Grid ESO on their connection agreements to Users.

### WALDORF PRODUCTION LIMITED

Advising on the acquisition of multiple upstream interests in the UK Continental Shelf with a combined value in excess of £500 million including on related financing, joint venture and offtake agreements.



**PAUL DIGHT**

Partner

+44 (0)77 3869 7302

Paul.Dight@

addleshawgoddard.com



**SARA GILMORE**

Partner

+44 (0)77 3802 3161

Sara.gilmore@

addleshawgoddard.com



# FOOD, RURAL AND ENVIRONMENTAL AFFAIRS

## HOW WE CAN HELP YOU

AG are currently working with a large number of cross-sector clients on a wide range of environmental issues.

We are proactively supporting many clients with implementing net-zero and biodiversity strategies, undertaking natural capital assessments, broadening their ESG and improving resource efficiency.

We advise on a range of flooding, drainage and coastal erosion issues; on habitats (and IROPI derogation and compensation) and on the limitations of emergency works powers.

AG also have a pre-eminent reputation advising on waste and food waste projects throughout the UK and overseas, working with public and private sectors and funders. We have been advising international food and beverage clients on plastic reduction and R&D projects and continue to advise on packaging waste.

We are also well regarded for our work relating to integrated water resource management (including drought planning, cross-sector collaboration and water quality issues).

The team also includes a former Environment Agency prosecutor.

## HOW WE HAVE HELPED OTHERS

### FOOD

Advising an international company on the diversion of its surplus food from manufacturing to animal feed and drafting the contracts which were put in place with the animal feed suppliers.

### RADIOACTIVE WASTE

Advising a waste management company on compliance, permitting, BAT, emission targets and the protection of sensitive information. Also advising a client on a joint EA/ONR investigation into unlawful transport of nuclear waste.

### WATER

Co-author of UKWIR's best practice guidance on developing best value water resource plans supported by the EA and Ofwat. Advising on WRSE's regional resilience plan and Anglian Water on its Middlegate DPC Project liaising with DEFRA, Ofwat & DWI.

### BIODIVERSITY

Supporting National Grid with the practical implementation of its biodiversity strategy and around delivery of environmental value to meet its Ofgem ODI's.

### WOODLAND CARBON GUARANTEE

Continuing to advise a client on its project following a successful auction bid.



**MICHELLE HEADRIGE**  
Partner  
+44 (0)77 7558 6472  
Michelle.Headrige@  
addleshawgoddard.com



**JOANNE HOLBROOK**  
Legal Director  
+44 (0)78 0344 2571  
Joanne.Holbrook@  
addleshawgoddard.com

# FRANCHISE LAW

## HOW WE CAN HELP YOU

Our lawyers review, interpret, draft and negotiate a wide variety of franchising contracts in different sectors on behalf of a range of clients from start-ups to FTSE 100 companies.

Our experience includes:

- Advising on drafting a template franchising agreement for a franchisor including development of brand standards, business operations standards, mystery shoppers; and access to and use of a common IT platform for the operation of the franchise business
- Advising on access to marketing platforms and campaigns with opt-ins for particular franchisees to campaigns
- Advice on provision of central services by franchisor and the terms of access, as well as procurement of those services from suppliers for the benefit of franchisees (for example IT services and marketing

## HOW WE HAVE HELPED OTHERS

### MAJOR UK FUNERALS BUSINESS

Drafting and finalising template franchise agreements for use in the franchisor's funeral business, including geographic protections for franchisees and options on new franchises, as well as common systems and brand refresh requirements.

### INTERNATIONAL FAST FOOD RESTAURANT CHAIN

Procurement of IT outsourcing services from Capgemini for all franchisee IT services including major transformational services, which are recharged to franchisees as part of franchise fee plus procurement of common marketing services, loyalty schemes, and advertising campaigns for opt in by franchisee businesses.

### INDIAN PREMIER LEAGUE

Drafting team franchise agreements and bid process for awarding team franchises in the world's leading cricket competition as well as associated player auctions and competition rules.



**JAMES WHITTAKER**

**Partner**

+44 (0)77 6421 1276

James.Whittaker@

addleshawgoddard.com



**GEORGINA POWLING**

**Partner**

+44 (0)77 3802 3380

Georgina.Powling@

addleshawgoddard.com

# HEALTH AND HEALTHCARE

## HOW WE CAN HELP YOU

Healthcare is a core business stream for AG and we have created a national team that work seamlessly across our offices. Our dedicated cross disciplinary healthcare team has amassed hands-on expertise across virtually every area of healthcare and is recognised as one of the UK's leading law firms.

We are one of the leading legal advisers in transactional work for the NHS. We are always at the forefront of new products and models such as alternate delivery vehicles, early termination of PFI deals, private bond placements and mergers & acquisitions. We are recognised for our pragmatic approach to challenging problems often by providing innovative solutions to procurement and governance problems.

Our team consists of lawyers with a vast amount of expertise in and experience of advising NHS Trusts and their private sector partners and supply chain. We apply these skills to work as partners with our clients, helping them drive forward the changes required to enable NHS bodies, and the public, private and third sector organisations operating with them.

## HOW WE HAVE HELPED OTHERS

### COMPLEX INFRASTRUCTURE: HOSPITALS

Acting for Guy's & St Thomas' Nhs Foundation Trust on the redevelopment of the Trust estate across its campuses at both Guy's and St Thomas' hospitals, which will see in excess of 20 infrastructure projects bought forward over a 15 year period with a development value in excess of £4 billion.

### MERGERS: MID & SOUTH ESSEX NHS FOUNDATION TRUST

Acting for Southend University Hospital NHS Foundation Trust, Mid Essex NHS Trust & Basildon & Thurrock University Hospital NHS Foundation Trust (now Mid and South Essex NHS Foundation Trust) in navigating the first three way merger of NHS Trusts within the NHS.

### CONSTRUCTION DISPUTES: NORTHUMBRIA HEALTHCARE NHS FOUNDATION TRUST

Acting for the Trust and Northumbria Healthcare Facilities Management Limited in their multiparty TCC claim against Lendlease in relation to a new build hospital which has multiple high value defects (including structural, M&E and fire related).

### TRANSFER OF SERVICES: DEPARTMENT OF HEALTH

We devised scheme documents to implement the transfer of community services to provider NHS trusts including property arrangements, procurement issues and TUPE transfers of staff.



**MICHAEL O'CONNOR**

**Partner**

+44 (0)77 7558 6483

Michael.O'Connor@

addleshawgoddard.com



**STEPHANIE TOWNLEY**

**Legal Director**

+44 (0)77 3888 8361

Stephanie.Townley@

addleshawgoddard.com

# HEALTH AND SAFETY

## HOW WE CAN HELP YOU

AG's safety team possesses market-leading experience in the field of health and safety, including fire and building safety, product and food safety. We can provide you with regulatory advice on a wide range of topics, including:

- health & safety responsibilities
- director's duties
- criminal liability
- corporate due diligence.

Having acted as Solicitor Agent for HSE in the past, we are able to apply the experience gained to assist you if and when something goes wrong.

We can support you in the initial investigation under legal professional privilege, during your initial dealings with the authorities, making written submissions or alternatively representing you in interviews under caution, and at all stages in the criminal court.

The team will work with you to manage all the risks arising out of the incident to ensure that you are fully protected as an organisation, whether that be from associated employment, corporate or reputation management threats.

## HOW WE HAVE HELPED OTHERS

### A LEADING FURNITURE MANUFACTURER

Advising in connection with an incident in which a driver was seriously injured in a workplace transport incident. Our client was prosecuted by HSE for breaches of HSWA, we secured reductions in harm, culpability and, by forensically analysing complex Group accounts, demonstrated that the client was a Medium, rather than a Large organisation. This led to significant reductions in the fine levied.

### A PUBLIC SECTOR ARM'S LENGTH BODY

Advising in connection with a fatal accident during a major civil engineering project. We advised on complex CDM, duty holder and contractual issues, prepared advice on legal liability, and responded robustly to HSE and HM Coroner to demonstrate that our client had discharged its CDM roles. To date this has led to no further enforcement action by HSE.

### TWO LOCAL AUTHORITIES

Advising in connection with fire safety concerns associated with a number of PFI care home developments following a major fire in one of their care home settings. This has included analysing our clients' discharge of their planning functions, advising on their legal duties and status under fire safety legislation, and responding to and refuting allegations made by the local fire and rescue service.



**ERIN SHOESMITH**

**Partner**

+44 (0)77 3802 3333

Erin.Shoemith@

addleshawgoddard.com



**ADRIAN MANSBRIDGE**

**Legal Director**

+44 (0)78 2708 2489

Adrian.Mansbridge@

addleshawgoddard.com

# IMMIGRATION

## HOW WE CAN HELP YOU

We advise on all aspects of business immigration. In particular we advise on the skilled worker sponsorship system and we act as representative on the sponsorship management system for a number of large employers. We also advise employers on compliance with their obligation to prevent illegal working. Examples of our work include:

- Applications for skilled worker and intra company transfer visas
- Applications for skilled worker and temporary worker sponsorship licences
- Advising regarding employer right to work processes
- Conducting audits of right to work processes and sponsor licence compliance
- Delivering training about the prevention of illegal working and sponsor licence compliance
- Advice regarding the business visitors rules
- Long-term immigration planning
- Advice to EU nationals about the EU Settlement Scheme

## HOW WE HAVE HELPED OTHERS

### ACTING AS LEVEL 1 USER AND SOLE ADVISOR FOR SKILLED WORKER VISAS

We act as representative and level 1 user on the skilled worker licence for a number of large institutions across a range of sectors, advising on all aspects of skilled worker sponsorship, visa applications and applications for indefinite leave to remain.

### RIGHT TO WORK TRAINING

We have delivered training on the prevention of illegal working to a range of clients including large retailers who have a requirement for right to work checks to be conducted across a range of settings and employee groups.

### TECHNICAL IMMIGRATION ADVICE FOR FORMER PUBLIC SECTOR EMPLOYER

We have advised a former public sector organisation regarding a wide variety of technical immigration questions related to their use of visa sponsorship and the business visitor rules.



**SARAH HARROP**

**Partner**

+44 (0)75 9577 7926

Sarah.Harrop@

addleshawgoddard.com



**SAJIDA HUSSAIN**

**Managing Associate**

+44 (0)78 8783 1218

Sajida.Hussain@

addleshawgoddard.com



# LIFE SCIENCES

## HOW WE CAN HELP YOU

AG's Life Sciences practice comprises a large, multi-disciplinary team. We advise clients from across the spectrum, from start-ups / spin-outs through to major multi-nationals, on a broad range of issues, ranging from raising finance through to disposal, and product liability to major international disputes.

Companies operating in the life sciences industry are consistently exposed to legal and regulatory changes and challenges. As such, understanding the scientific, business and political challenges facing companies operating in the sector enables us to provide commercially relevant advice to some of the world's leading life sciences companies – including GlaxoSmithKline, Thermo Fisher and Roche Diagnostics.

## HOW WE HAVE HELPED OTHERS

### BRUNTWOOD SCITECH

Acting for Bruntwood on the formation of the Bruntwood Sci-Tech, a 50/50 joint venture between Bruntwood and Legal & General to create the UK's leading property provider dedicated to driving the growth of the science and technology sector.

### GSK ON SEROXAT GROUP LITIGATION

On 3 July 2020, we obtained victory for GSK, the UK's largest pharmaceutical company, in its defence of over 100 claims brought under a Group Litigation Order arising from the use of a prescription-only antidepressant drug, Seroxat. Seroxat was alleged to be defective within the meaning of the Consumer Protection Act 1987 (CPA) because of a single aspect of its adverse event profile, namely symptoms upon discontinuation. A payment on account of GSK's costs was also ordered in the sum of £4.5m, with the question of payment to be adjourned generally with liberty to restore. This success brought to an end a long-running litigation that at one point had a claimant group of over 500.

### IMMUNODIAGNOSTIC SYSTEMS HOLDINGS PLC

Advising IDS, a leading in-vitro diagnostic solution provider to the clinical laboratory market on a recommended cash offer by PerkinElmer implemented by means of a Scheme of Arrangement.

### ROYAL LIVERPOOL HOSPITAL

We acted for the Royal Liverpool Hospital on the procurement, contract award, design and build of a life sciences accelerator facility as part of the Liverpool Knowledge Quarter.



**SHELLEY MCGIVERN**

Partner

+44 (0)78 3467 7774

Shelley.McGivern@

addleshawgoddard.com



**MICHAEL O'CONNOR**

Partner

+44 (0)77 7558 6483

Michael.O'Connor@

addleshawgoddard.com

# MARITIME AND SHIPPING

## HOW WE CAN HELP YOU

We represent a domestic and international client base in relation to:

- **Transactions:** including sale and purchase of tonnage on the secondary market; ship building contracts; time charter, tenders and project negotiations; bareboat charter and leasing structures.
- **Goods-in-Transit:** advising in relation to bills of lading, ocean freight services and contracts of affreightment, freight forwarding and project cargo.
- **Ship Finance:** acting for lenders and borrowers; marine securities; refinancing projects; advisory and restructuring of stressed situations.
- **Ship Registration:** with an experience of ship registration in over 25 jurisdictions, Ed Watt is a recognised expert and author of "Ship Registration: Law and Practice", the leading practitioner's guide in this area.
- **Litigation:** including charterparty and bills of lading disputes, enforcements and repossessions for lenders, commercial claims and insurance disputes.

## HOW WE HAVE HELPED OTHERS

### CALEDONIAN MARITIME ASSETS

Supporting CMAL, an asset-holding company owned by the Scottish Ministers, in the purchase of passenger and cargo ferries – both newbuilding contracts and second-hand acquisitions. Drafting and negotiating charterparty and leasing structures for the operation of the CMAL fleet of over 30 vessels.

### TRANSPORT FOR LONDON

Representing the lead contractor to TFL in the procurement of two bespoke design newbuild ferries for the cross-Thames service at Woolwich, including shipyard tendering, build contract negotiations and the procurement of state-of-the art shoreside infrastructure.

### MINISTRY OF DEFENCE

Advising a strategic business owned by the UK Ministry of Defence upon a complex project cargo charterparty for the ocean carriage of a vast array of dismantled heavy industrial machinery from the Far East to England, including marine insurance aspects.



**ED WATT**

**Partner**

+44 (0)79 1819 4277

Ed.Watt@

addleshawgoddard.com



**CHLOE OAKSHETT**

**Associate**

+44 (0)77 3312 0982

Chloe.Oakshett@

addleshawgoddard.com

# MEDIA LAW

## HOW WE CAN HELP YOU

Our market leading reputation and information lawyers – for many years ranked in the top tiers by the legal directories – use the laws of confidentiality, privacy, defamation and data protection to help our clients protect their valuable reputations and information.

We help businesses and individuals to deal with potentially damaging media exposure before publication or broadcast, or after the event when the record needs to be set straight. Usually this involves working with in-house communications teams and/or external PR agencies to manage the crisis.

The team is available out of hours and at weekends, to provide urgent round-the-clock advice, to negotiate with the media or other interest group, and to make emergency injunction applications.

## HOW WE HAVE HELPED OTHERS

### REPUTATION PROTECTION

- Preventing and mitigating broadcast or publication of damaging allegations
- Securing retractions and apologies after material has been published
- Reputational risk management, including planning and training.

### INFORMATION PROTECTION

- Securing confidential information after data leaks, hacks and insider threats
- Defending freedom of information requests against public bodies
- Preventing publication of private information about individuals.

### DIGITAL MEDIA & DATA RISK

- Strategic advice on social media storms
- Securing takedowns of online material, including internet 'wipe cleans'
- 'Right to be forgotten' claims against online platforms.



**DAVID ENGEL**

**Partner**

+44 (0)77 1169 1622

David.Engel@

addleshawgoddard.com



**NEIL O'SULLIVAN**

**Associate**

+44 (0)77 0227 5098

Neil.O'Sullivan@

addleshawgoddard.com

# PUBLIC INQUIRIES AND INQUESTS

## HOW WE CAN HELP YOU

### PUBLIC INQUIRIES

Our specialist team has broad experience of acting at major public inquiries across a spectrum of matters for families, corporates and government organisations.

### INQUESTS

We have acted for a range of organisations, including non-departmental public bodies, at both article 2 inquests and otherwise. We provide advice and support from beginning to end, such as applications for properly interested person status, scope, disclosure, witness evidence, requirement for a jury, advocacy and reports preventing future death.

### WHY WORK WITH US

- Our team members draw on their in-depth knowledge of health and safety, corporate crime, dispute resolution and insurance disputes to support clients throughout the inquisitorial processes
- We provide a full service covering the criminal and civil proceedings that might run alongside an inquiry or inquest
- We are adept at utilising technology to streamline our work on inquiries including how we manage disclosure
- We have reputation management specialists to support our team in advising on strategic communications and navigating the media

## HOW WE HAVE HELPED OTHERS

- a core participant at the Grenfell Tower inquiry and all related investigations including civil, criminal and inquisitorial.
- three bereaved families at the Manchester Arena inquiry.
- a core participant in connection with the Hospitals Inquiry in Scotland.
- a leading care institution in Scotland to provide written evidence to the Scottish Child Abuse Inquiry.
- a Scottish care provider on the operation of Redress Scotland – a compensation scheme for survivors of historical child abuse.
- in connection with a complex inquest into the death of a minor on the rail infrastructure involving a wide range of organisational Interested Persons and allegations of historical offences.
- a rail organisation on a high profile Inquest involving issues of electrical isolation and recovery of potentially injured persons.
- members of our team have also:
  - worked on the Jersey Care Inquiry in relation to historical abuse of children in care.
  - acted as special advisor to a Parliamentary Inquiry into misconduct in the private investigations industry in the wake of the phone hacking scandal.
  - advised Sir Christopher Kelly on his independent public review of the causes of the capital shortfall at Co-operative Bank plc.
  - Prepared a senior bank executive for appearances before the Treasury Select Committee.



**ERIN SHOESMITH**

**Partner**

+44 (0)77 3802 3333

Erin.Shoemith@

addleshawgoddard.com



**HELEN MATTINGLY**

**Managing Associate**

+44 (0)75 4055 8122

Helen.Mattingly@

addleshawgoddard.com

# PUBLIC INTERNATIONAL LAW

## HOW WE CAN HELP YOU

We are one of a relatively small number of firms outside the Global Elite which has a sizeable and highly regarded international arbitration team, with experience and expertise in investment treaty arbitration (including proceedings under the ICSID convention) and public international law.

Our lawyers have a strong track record of acting for both States and investors in major investment treaty and commercial arbitrations across the energy, industrial, manufacturing and construction sectors. We advise on matters such as treaty interpretation, the operation of MFN provisions, the application of treaty standards and the structuring of foreign investments to take advantage of treaty protection.

We work across a global platform, fielding cross-office teams which leverage the specialist expertise of practitioners based in our international offices (including Hamburg, Paris, Hong Kong, Singapore and Dubai).

We are experienced advocates and are able to conduct all of the written and oral advocacy in any proceedings, but also regularly work as co-counsel with barristers (including barristers appointed Counsel to the Crown on the UK Attorney General's Public International Law Panel).

## HOW WE HAVE HELPED OTHERS

### REPRESENTING STATE DEFENDING MAJOR INVESTMENT TREATY CLAIM

We are representing a State defending a major investment treaty claim under the Organisation of the Islamic Conference Investment Agreement. The Claimants are seeking damages in the order of several hundred million dollars and the issues in dispute include matters of treaty interpretation and the application of treaty standards in the context of a decision not to grant concessional energy tariffs.

### SUCCESSFUL RESOLUTION OF INVESTMENT CLAIM

We secured a successful settlement of potential claims against Malaysia under the 1987 ASEAN treaty on behalf of our client, a Thai investor. The claims arose from the infamous Malaysian Supreme Court case of *Adorna Properties*, which was widely regarded by the Malaysian legal community as a notorious miscarriage of justice. Through our work we achieved what decades of litigation before the Malaysian courts had failed to achieve and finally secured justice for our client.



**JON TWEEDALE**

**Partner**

+44 7709 484 603

Jon.Tweedale@

addleshawgoddard.com



**BEN BURNHAM**

**Managing Associate**

+44 7715 237 593

Ben.Burnham@

addleshawgoddard.com

# TELECOMMUNICATIONS

## HOW WE CAN HELP YOU

AG's Telecoms team has specialists covering main areas of telecom support, technology procurement and regulatory, infrastructure and projects real estate and construction dealing with all aspects of telecoms work.

Our recent experience includes:

- Regulatory advice on the telecoms and data / regulatory investigations position of vehicular wifi (which can be used for a range of services, including black box data, location, concierge, as well as internet access) when installed by vehicle manufacturer
- Procurement of large scale telecoms solutions for public and private sector bodies, including LAN and WAN, nationally and internationally and associated grant funding
- Installation and services associated with Fibre to the Premises (FTTP) and from backbone to premises end-point including property and construction issues (including Code powers), plus end-user services agreement.
- Property and Construction issues on siting and installation of telecoms equipment including mobile and fibre infrastructure for 4G and 5G, and digital antenna systems.

## HOW WE HAVE HELPED OTHERS

### SMART DCC

Advising the Data Communications Company on the procurement of the 4G network evolution for the next generation communications hubs and associated 4G network services for smart metering in the UK.

### MAJOR MOBILE NETWORK OPERATOR

Advising European MNO on provision of SIM and mobile services to vehicle manufacturers on the regulatory position with regard to service provision and retention and inspection of data generated in the provision of such services including the General Conditions of Entitlement.

### FTTP

Advising a number of FTTP operators on agreements with landlords and ISPs, as well as end-user customers, in relation to the wide-scale installation of FTTP, operation and service provision plus financing and corporate structures to facilitate private sector investment.



**JAMES WHITTAKER**

**Partner**

+44 (0)77 6421 1276

James.Whittaker@

addleshawgoddard.com



**SUZANNE MOIR**

**Partner**

+44 (0)78 2460 0341

Suzanne.Moir@

addleshawgoddard.com

# INTERNATIONAL TRADE, INVESTMENT AND REGULATION

## HOW WE CAN HELP YOU

We have specialist lawyers who advise on various aspects of international trade compliance, with a particular focus on financial and trade sanctions programmes and export controls.

We are recognised as global leaders in Who's Who Legal: Trade and Customs (International Sanctions) 2019 and 2020, with three of our lawyers recognised for their work in this area.

We regularly advise FTSE 100 and 250 companies as well as other multinationals in relation to trade compliance and supply chain matters, including the impact of Brexit, as well as helping our clients to develop global internal compliance programmes.

We are closely following the new UK foreign investment control regime and actively advising our clients on this issue.

We also have significant depth of expertise across a number of regulatory areas, including environmental, health and safety and data privacy issues.

## HOW WE HAVE HELPED OTHERS

### FTSE 250 ADVANCED MATERIALS BUSINESS

Advising on compliance with export controls and international sanctions measures, including in relation to EU, UK and US export licensing requirements, international sanctions measures and third party due diligence processes.

### FTSE 100 RETAILER

Advising on the impact of Brexit on EU-UK supply chain issues, including in relation to the application of the Northern Ireland Protocol and the impact on the movement of goods from Great Britain to Northern Ireland.

### FOREIGN DIRECT INVESTMENT (FDI)

We routinely advise parties in respect of global restrictions on foreign direct investment and national security. We currently have over a dozen live deals on which the UK's new National Security and Investment Act is a live feature and will regularly manage FDI notifications and processes globally (including CFIUS in the US, FIRB in Australia and the various new European regimes).



**NICHOLA PETERS**

Partner  
+44 (0)75 4020 1707  
Nichola.Peters@  
addleshawgoddard.com



**AL MANGAN**

Partner  
+44 (0)77 2578 1720  
Al.Mangan@  
addleshawgoddard.com

**MORE IMAGINATION MORE IMPACT**

[addleshawgoddard.com](http://addleshawgoddard.com)

© Addleshaw Goddard LLP. This document is for general information only and is correct as at the publication date. It is not legal advice, and Addleshaw Goddard assumes no duty of care or liability to any party in respect of its content. Addleshaw Goddard is an international legal practice carried on by Addleshaw Goddard LLP and its affiliated undertakings – please refer to the Legal Notices section of our website for country-specific regulatory information.

For further information, including about how we process your personal data, please consult our website [www.addleshawgoddard.com](http://www.addleshawgoddard.com) or [www.aglaw.com](http://www.aglaw.com).